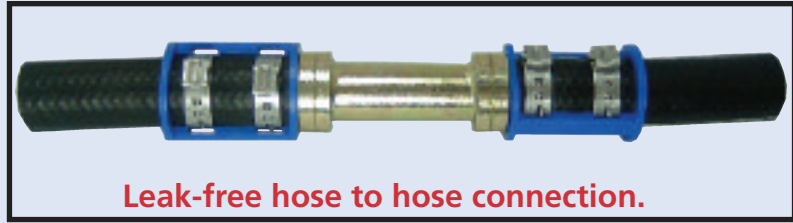


# LOK CRIMP R134a REDUCED BARRIER HOSE & TUBE REPAIR



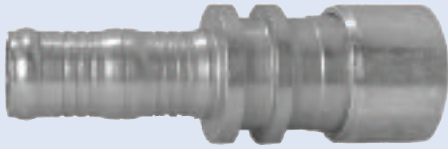
Leak-free tube to hose connection.



Leak-free hose to hose connection.

All fittings include blue cage & clamps.

Hose to tube repair fitting.



ALUMINUM		
FMSI #	HOSE	TUBE
5381	#6	3/8"
5382	#8	1/2"
5383	#10	5/8"
5384	#12	3/4"

Hose to hose repair fitting.



STEEL		
FMSI #	HOSE	
5389	#6 - 5/16"	
5390	#8 - 13/32"	
5391	#10 - 1/2"	
5392	#12 - 5/8"	

Hose to tube repair fitting.

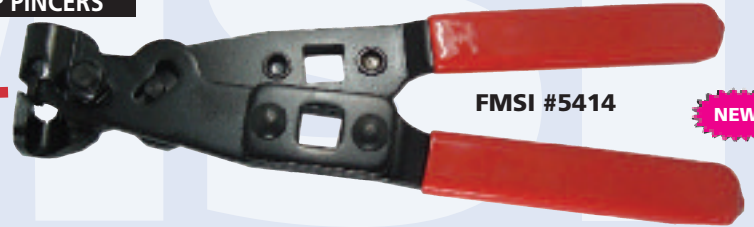


STEEL		
FMSI #	HOSE	TUBE
5385	#6	3/8"
5386	#8	1/2"
5387	#10	5/8"
5388	#12	3/4"



BLUE CAGE & CLAMPS		
FMSI #	HOSE	
5324	#6 - 5/16"	
5325	#8 - 13/32"	
5326	#10 - 1/2"	
5327	#12 - 5/8"	

360° SEAL CLAMP PINCERS



FMSI #5414

NEW

## LOK CRIMP HOSE & TUBE REPAIR SYSTEM ASSORTMENT #0464



#0464 Assortment includes #5414 pincers.

Lok Crimp System also repairs transmission, oil, and power steering cooler lines & hoses.